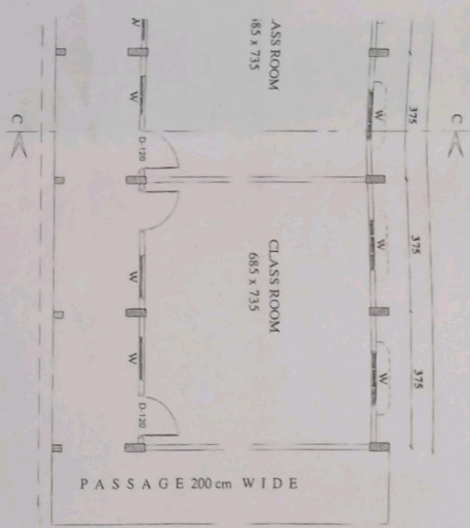
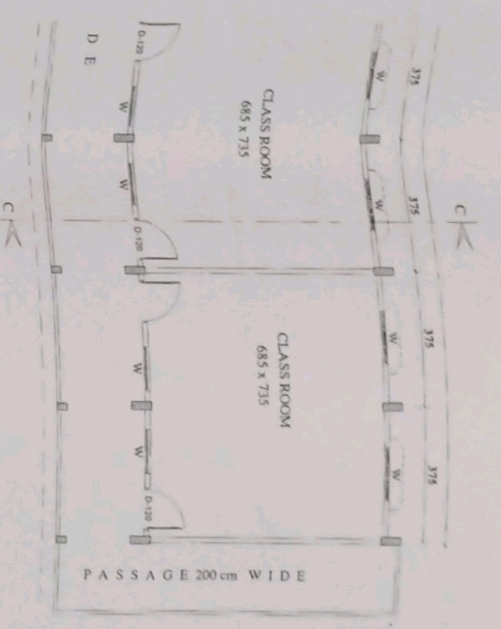


**GROUND FLOOR PLAN**



**TYPICAL FLOOR PLAN (first second, third)**



**ARCHITECT/DRAWN**

SIGNATURE OF THE ARCHITECT

**APPROVED**  
**NATURE OF THE AUTHORITY**

AREA STATEMENT	AREA
EXISTING SCHOOL BUILDING FOR EXPANSION OF SCHOOL BUILDING	1231.64 sqm
BUILT UP AREA	1628.37 sqm
GROUND FLOOR	397.74 sqm
FIRST FLOOR	397.74 sqm
SECOND FLOOR	397.74 sqm
THIRD FLOOR	397.74 sqm
CORRIDOR	296.15 sqm
GROUND FLOOR	314.99 sqm
FIRST FLOOR	314.99 sqm
SECOND FLOOR	314.99 sqm
THIRD FLOOR	314.99 sqm
TERRACE	214.68 sqm
<b>TOTAL BUILT UP AREA</b>	<b>1628.37 sqm</b>
<b>TOTAL CARPET AREA</b>	<b>1231.64 sqm</b>

FLOOR	Area
GROUND FLOOR	2803.98 sqm
FIRST FLOOR	1950.21 sqm
SECOND FLOOR	1950.21 sqm
THIRD FLOOR	1950.21 sqm
TERRACE	466.66 sqm
<b>GROUND FLOOR</b>	<b>1560.16 sqm</b>
<b>FIRST FLOOR</b>	<b>1560.16 sqm</b>
<b>SECOND FLOOR</b>	<b>1560.16 sqm</b>
<b>THIRD FLOOR</b>	<b>1560.16 sqm</b>
<b>TERRACE</b>	<b>373.22 sqm</b>
<b>TOTAL BUILT UP AREA</b>	<b>7991.27 sqm</b>
<b>TOTAL CARPET AREA</b>	<b>6277.96 sqm</b>
<b>GRAND TOTAL</b>	<b>9507.84 sqm</b>
<b>TOTAL BUILT UP AREA</b>	<b>7561.60 sqm</b>

FLOOR	Area
GROUND FLOOR	1284.99 sqm
FIRST FLOOR	1284.99 sqm
SECOND FLOOR	1284.99 sqm
THIRD FLOOR	1284.99 sqm
TERRACE	642.49 sqm

SCALE 1:100

**MATERIALE & APPROVALS**

NO.	DESCRIPTION	DATE
1	...	...
2	...	...